



**CONTERA PARK
OSTRAVA CITY**

EXISTING SPACE

80 600 sqm



CONTERA



CONTERA PARK OSTRAVA CITY

Contera Park Ostrava City offers modern premises in the area of production and logistics services with high standard specifications. The park has been developed on a brownfield previously used as a cement factory.

Buildings A and B were built between 2014 and 2015, building C was built in several stages between 2015 and 2017. The most recent addition to the park is building D, delivered in 2019.

Located in the heart of the city, the park offers a unique business environment with public transportation and all support services on-site.

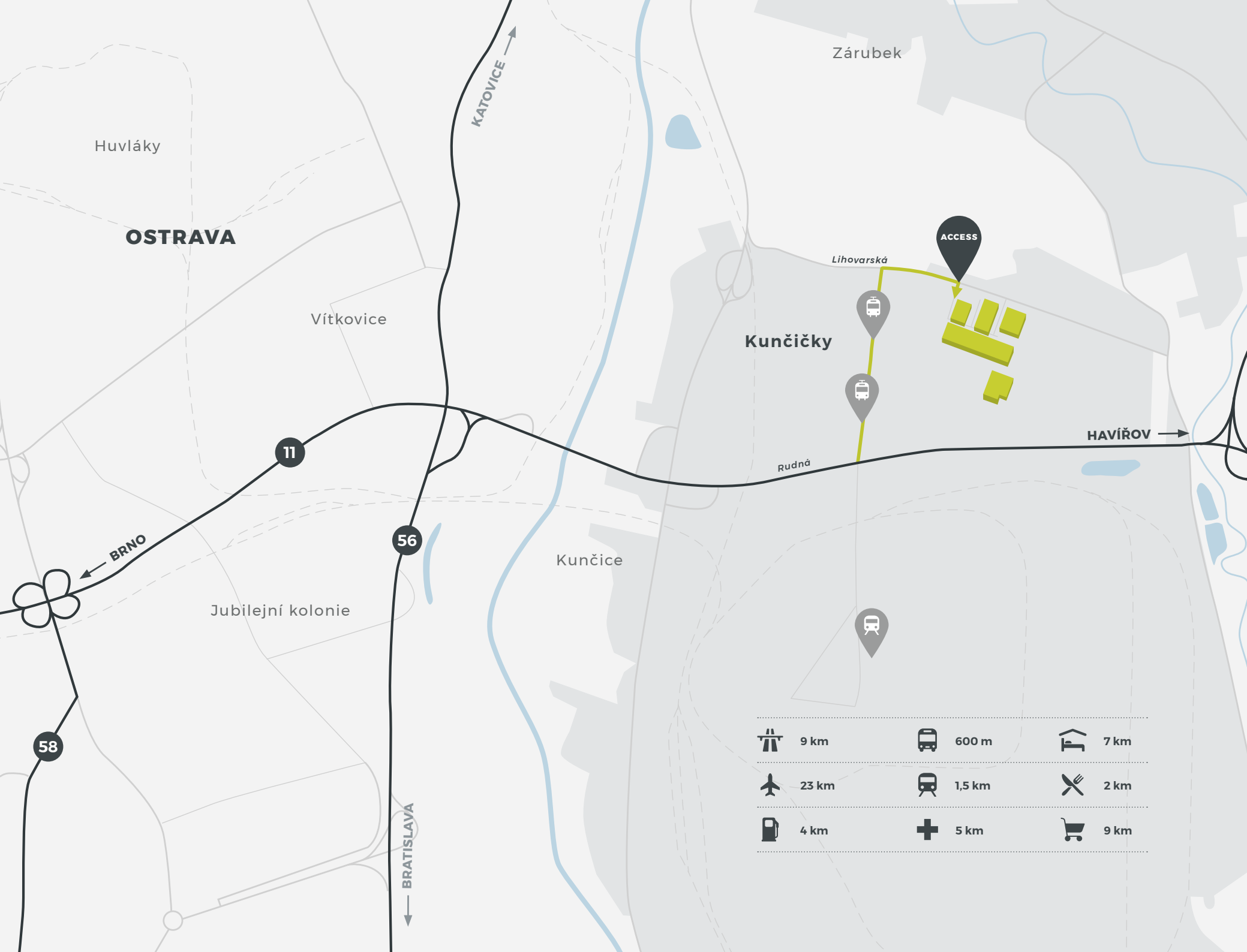


PARK ADDRESS

Lihovarská 679/40
718 00 Ostrava-Kunčičky
Czech Republic

Katovice 90 km
Žilina 98 km
Olomouc100 km
Krakov160 km

Brno 170 km
Vratislav 230 km
Bratislava 293 km
Prague 370 km



Huvláky

OSTRAVA

Vítkovice

KATOVICE →

Zárubek

ACCESS

Lihovarská

Kunčičky

HAVÍŘOV →

Rudná

Kunčice










← BRNO

56

Jubilejní kolonie

← BRATISLAVA

58

	9 km		600 m		7 km
	23 km		1,5 km		2 km
	4 km		5 km		9 km

← BRNO

ACCESS

7 500 sqm
A

11 200 sqm
B

19 200 sqm
D

30 000 sqm
C

12 700 sqm
H

Lihovarská

HAVÍŘOV →

11

Existing buildings



DEVELOPMENT CONCEPT

TOTAL LETTABLE AREA

80 600 sqm

Building A

7 500 sqm

Building B

11 200 sqm

Building C

30 000 sqm

Building D

19 200 sqm

Building H

12 700 sqm

BUILDING STANDARDS

Column grid

12 x 24 m

Clear height

10 m

Floor loading capacity

5 t/sqm

ESFR sprinkler system

Flexibledock levelers and drive-in access

LED lighting

Flexible office layout with air conditioning



TENANTS' PROFILES

DB SCHENKER

hart

clinitex[®]
medicalwear

RUUKKI

esa *logistika*

IKEA[®]


MALFINI[®]

ALUDYNE[™]

 **VAS**
Solutions



CONTERA

CONTACT

Laurent Jechoux

Business Director

E: laurent.jechoux@contera.cz

M: +420 724 852 820

Lucie Havlíčková

Leasing Manager

E: lucie.havlickova@contera.cz

M: +420 777 482 071



- STRATEGIC PARTNER -